

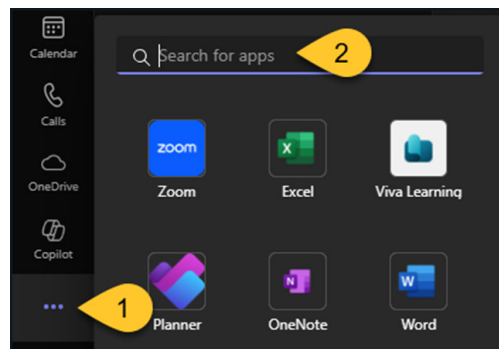
How do I set up Zoom inside Microsoft Teams?

STEP 1

Within Microsoft Teams, select the ellipsis (...) option.

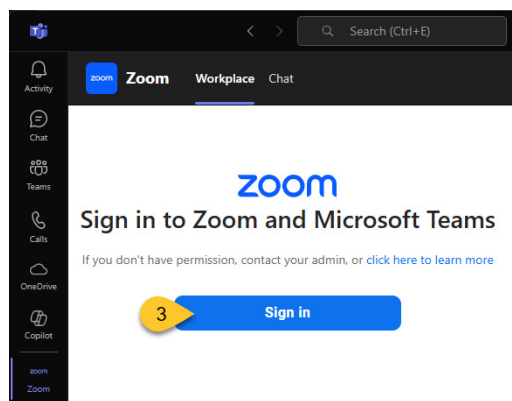
STEP 2

If Zoom does not appear, search for *Zoom* in the search bar.



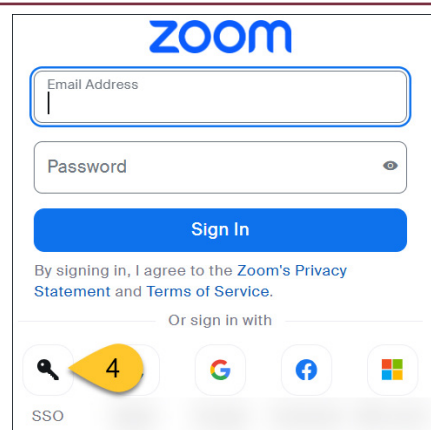
STEP 3

Select the **Sign in** button to sign in to Zoom.



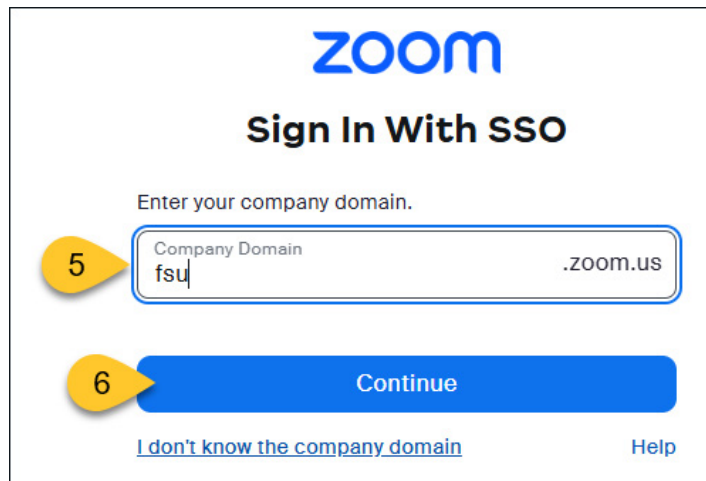
STEP 4

Select the **SSO** option for sign-in.



STEP 5

Enter **fsu** in the *Company Domain* text box.

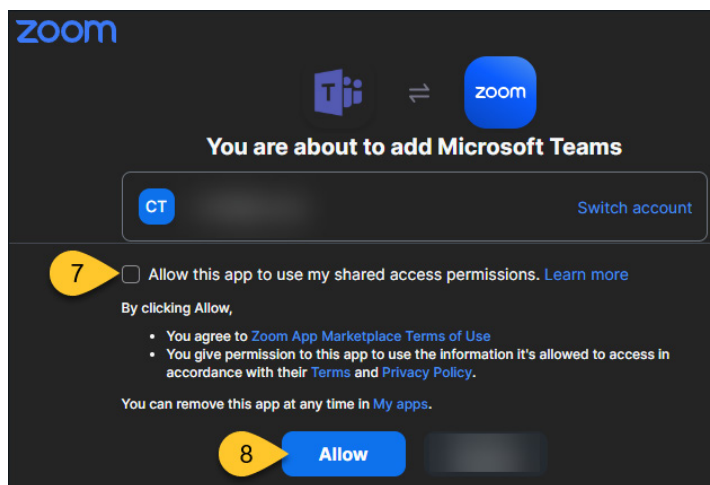


STEP 6

Select the **Continue** button.

STEP 7

Select the **Allow this app...** checkbox.



STEP 8

Select the **Allow** button.

STEP 9

Select the **Confirm** button to connect your FSU Microsoft account to Zoom.

zoom



Confirm

