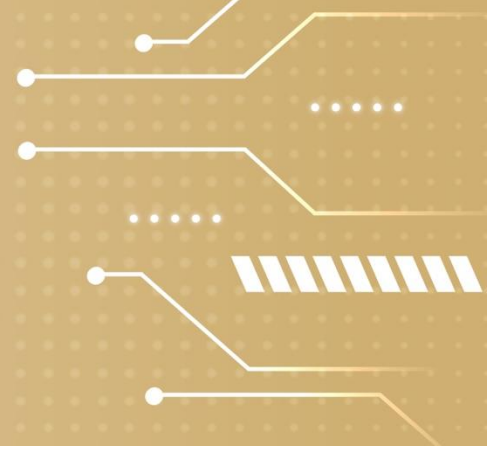
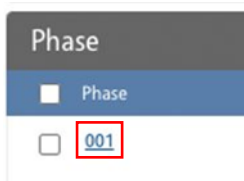


# INTRODUCING AN ENHANCED *MYFSU* *SERVICE CENTER* EXPERIENCE

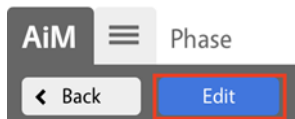


## Adding Shop Stock to Work Order

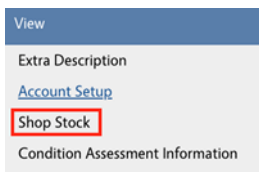
From a Work Order, click on the desired Phase



Click **Edit** from the top menu



Select **Shop Stock** in the menu on the left side of the screen



Click **Add** on the right side of the screen



# INTRODUCING AN ENHANCED *MYFSU* SERVICE CENTER EXPERIENCE

Select the desired stock from the list

Stock Number	Description
<b>SRVTEL SPLIT</b>	TFL SPLIT CHARGE
CCUCCEEEEDATA	COMCAST UCC FEE DATA
DMSPRINTERFACE	PRI INTERFACE
DSL1.5MB	DSL UP TO 1.5 MB PREFERRED
DSL5.0MB	DSL UP TO 5.0MB PREMIER
SRVINTERNET	INTERNET SERVICE
CCOTHERDATA	COMCAST DATA CHARGES
CCSTATICIP_1	COMCAST STATIC IP (1)
SRVFIBER250MRMAN	250 MB MAN FIBER CONNECTION - UNITI
SRVMEN2-21MBACCESS	MFN2 21 MB ACCESS

- To display more results on a page, click the numbers at the bottom of the page

Page  of 10  Display: 10 25 50

- To navigate through the pages of results, use the options on the bottom of the page

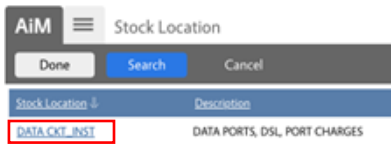
First Previous Next Last

Click the magnifying glass next to **Stock Location**

Stock Location

# INTRODUCING AN ENHANCED *MYFSU* *SERVICE CENTER* EXPERIENCE

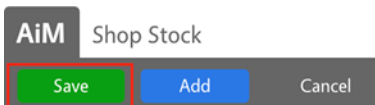
Select the desired location from the list



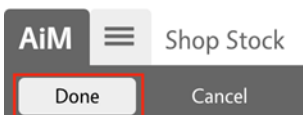
Fill in the quantity in the field next to **Quantity**

Quantity

Click **Save**



Click **Done**



Click **Save**

